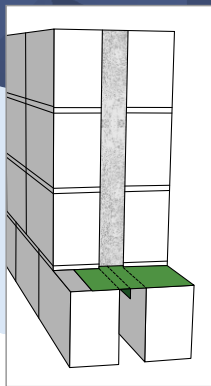


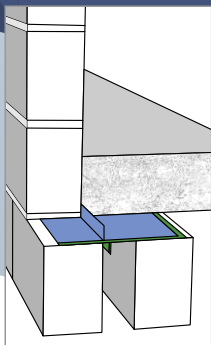
CAVITY CLOSURE & SLIP JOINT

Eezi Cavity Closure is put in place before the top brickwork layers are built to prevent concrete weeping into the cavity below.



2 units are placed back to back to form a slip joint.

Placement of concrete in the cavity is vital to create a sturdy ring beam to the structure and a means of anchoring roof ties.



BENEFITS

- ▶ Improved construction
- ▶ Prevention of damp to cavity walls
- ▶ No rust
- ▶ Green product as the closure is recycled high density polyethylene
- ▶ Manufactured in 3m lengths to facilitate ease of placement
- ▶ UV resistant
- ▶ Available to all builders via building retail outlets

CONCRETE SLABS

This **cavity closure** can be used as a slip joint to in-situ or pre-fabricated concrete slabs to high rise structures.